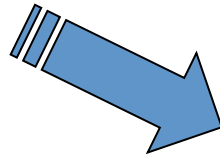
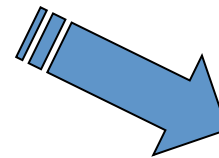


What is Drought?

Meteorological



Agricultural



Hydrological

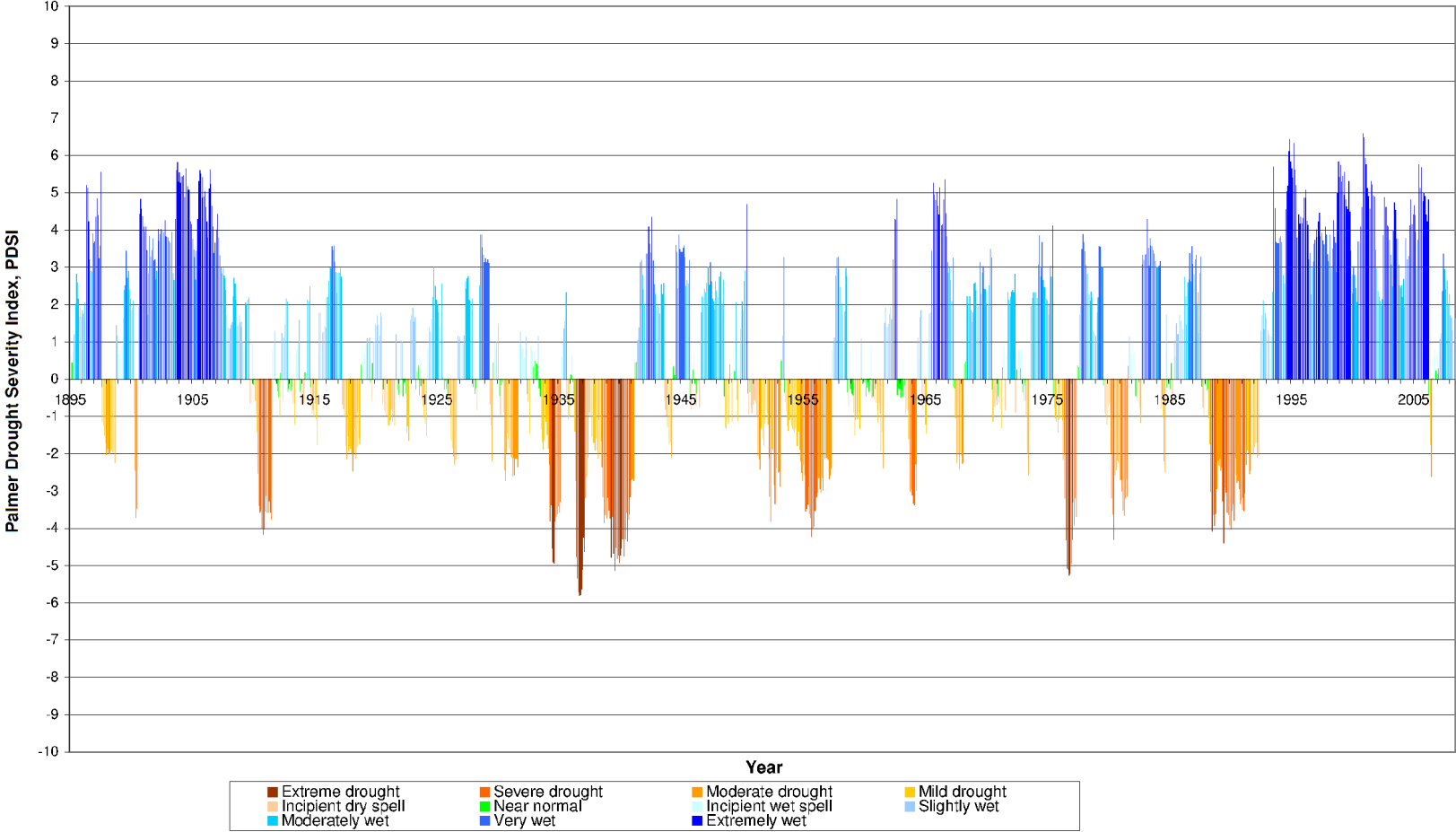


Socioeconomic

Measuring Drought

-4.0 or less Extreme drought	-3.0 to -3.9 Severe drought	-2.0 to -2.9 Moderate drought	-1.0 to -1.9 Mild drought	-0.5 to -0.9 Incipient dry spell	-0.49 to +0.49 Near normal	0.5 to 0.9 Incipient wet spell	1.0 to 1.9 Slightly wet	2.0 to 2.9 Moderately wet	3.0 to 3.9 Very wet	4.0 or more Extremely wet
---------------------------------	--------------------------------	----------------------------------	------------------------------	-------------------------------------	-------------------------------	-----------------------------------	----------------------------	------------------------------	------------------------	------------------------------

Historic Palmer Drought Severity Index for East Central North Dakota
1895-June 2008



WATER ISSUES: SUPPLY & DROUGHT

Overview: Morrie Lanning

Water Availability: Facts and Data

"Climate Cycles and Projections" Mark Ewens, NWS

"Water Supplies and Sources" Harvey Thorleifson, MN GS.

**Water Availability: –
Approaches , Alternative and Options**

"Jurisdictional Approaches" Lance Yohe, RRBC

"Alternative Approaches" Rhonda McDougal, MB Cons/WS

"Future Options" Morrie Lanning